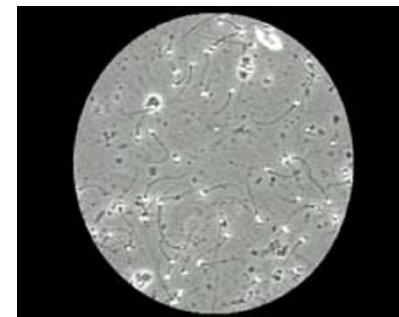




Reproductive Science

Andrology Scheme 2014-2015



Enquiries to:
Email: repscience@ukneqas.org.uk
Web: <http://www.cmft.nhs.uk/ukneqasrepsci.aspx>

Tel: +44 (0)161 276 6437/6456
Fax: +44 (0)161 276 6609

UK NEQAS Reproductive Science
Scheme Administrator
Andrology Laboratories,
Old Saint Mary's Hospital,
Oxford Road,
Manchester,
M13 9WL,
United Kingdom.

Enquires: Email: repscience@ukneqas.org.uk
Tel: +44(0)161 276 6437/6456
Web: <http://www.cmft.nhs.uk/ukneqasrepsci.aspx>

Clinical Value

External Quality Assessment (EQA) is:

- ◆ A fundamental procedure in the investigation of infertility.
- ◆ Used by clinicians to estimate the probability of conception and to monitor and advise on appropriate treatment.

Quality

Erroneous results can lead to an incorrect diagnosis. Semen analysis needs to be accurate and precise.

Standardisation of protocols should minimise variation between laboratories. The latest edition of the WHO laboratory manual for the examination and processing of human semen is recommended.

Quality Assessment

External quality assessment schemes help to assess performance and should be used in conjunction with internal quality control procedures.

Motivation for External Quality Assessment

- ◆ Provides information on the relative performance of different methods
- ◆ Improves knowledge about the participants' ability to perform and report semen analysis
- ◆ Ensures that clinicians and patients have confidence in the service
- ◆ Responds to increasing pressure to demonstrate quality processes, for example for accreditation by HFEA, CPA or ISO.

2/4

Distributions

Participants will receive four distributions per annum. If the distribution does not arrive on time or you cannot access the online modules it is essential that you inform us immediately.

Each distribution will consist of:

- 4 semen samples for Concentration and Morphology assessment.
- 4 online Motility videos hosted by <http://gamete-expert.com> .
- 24 online Morphology images hosted by <http://gamete-expert.com>

Please submit results for ALL these components.

The distributions will be sent out on:

12 May 2014, 11 Aug 2014, 10 Nov 2014 and 9 Feb 2015

Results should be entered online within four weeks.

Results and reports service

Concentration and practical morphology results should be entered at <https://results.ukneqas.org.uk> .

Online motility and morphology results should be entered at <http://gamete-expert.com> .

All new participants will be provided with instructions and passwords. Reports will be available within one month of the distribution closing date at: <https://results.ukneqas.org.uk>

The Scheme year runs April - March Fees 2014-2015

Semen Analysis (including online modules)	£500.00
Overseas postage and packaging fee	£65.00

Laboratories may purchase additional licences for a nominal fee (see enrolment form) for internal quality control and training purposes. Licensed individuals who are members of ACE or IBMS can claim points for continued professional development on submission of results. All fees will be automatically charged VAT unless you are from UK NHS (England) or provide a copy of a valid exemption certificate.

Annual Participants' Meeting

We have a Participants' Meeting which is held each March. A nominal charge is made for this meeting. Details will be forwarded to all scheme members.

3/4