

UK NEQAS

Reproductive Science

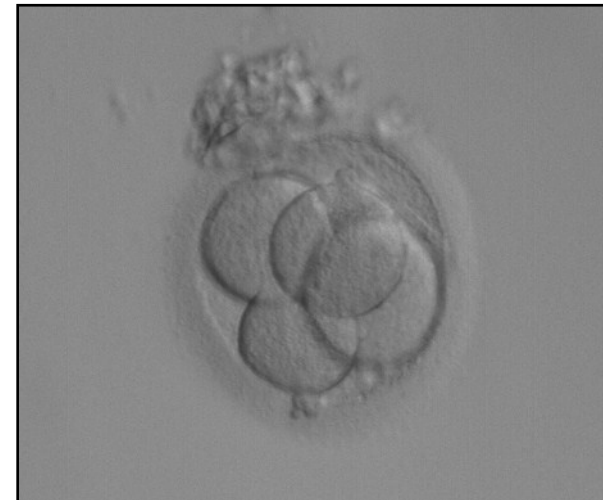
Embryology Scheme 2017-2018

Enquiries to:

Email: repscience@ukneqas.org.uk
Web: <http://www.cmft.nhs.uk/ukneqasrepsci.aspx>

Tel: +44 (0)161 276 6437/6456
Fax: +44 (0)161 276 6609

UK NEQAS Reproductive Science
Department of Reproductive Medicine
Central Manchester University Hospitals NHS Foundation Trust
Old St Mary's Hospital
Oxford Road
Manchester. M13 9WL
United Kingdom



Enquires: Email: repscience@ukneqas.org.uk
Tel: +44(0)161 276 6437/6456
Web: <http://www.cmft.nhs.uk/ukneqasrepsci.aspx>

Clinical Value

Assessment of embryo morphology is used by laboratories to select embryos after IVF/ICSI for transfer and for cryopreservation.

The scheme uses a standardised system for assessment of embryo morphology developed in conjunction with the Association of Clinical Embryologists.

The HFEA in the UK requires units to implement an elective single embryo transfer (eSET) policy to reduce the multiple birth rate eventually to below 10%

Guidance in the 8th Code of Practice recommends that centres participate in inter-centre comparisons and inter-laboratory comparisons and that the results of these comparisons and relevant findings are used to improve treatment services.

Quality Assessment

External quality assessment schemes help to assess performance and should be used in conjunction with internal quality control procedures.

Motivation for External Quality Assessment

- ◆ Provides data for comparison of results with other laboratories
- ◆ Improves knowledge about the participants' ability to assess embryos.
- ◆ Internal quality control – allows comparison of results within a laboratory.
- ◆ Ensures that clinicians and patients have confidence in the service
- ◆ Responds to increasing pressure to demonstrate quality processes, for example, for accreditation by HFEA or UKAS.

Annual Participants' Meeting

We have a Participants' Meeting which is held each March. This is a chance for participants to meet each other and hear the latest developments in the world of Reproductive Science. Details are forwarded to all scheme participants.

2/4

Distributions

Participants will receive four distributions per annum. If you cannot access the online module it is essential that you inform us immediately.

Each distribution will consist of:

- ◆ 4 'virtual patient cases' each with 4 embryos videos hosted by the Gamete-Expert website.

These are a combination of 'rolling' videos and time-lapse images captured from the time lapse imaging incubator and will include early cleaving to blastocyst stage embryo grades.

The distributions will be sent out on:

8 May 2017, 7 Aug 2017, 6 Nov 2017 and 5 Feb 2018

Results should be entered online within four weeks.

Results and reports service

All participants will be provided with passwords from:

<http://gamete-expert.com>

Reports will be available after the distribution closing date from:

<https://results.ukneqas.org.uk>

All new participants will be provided with instructions and passwords.

The Scheme year runs April - March Fees 2017-2018

Embryo morphology £565.00

Laboratories may purchase additional logins for a nominal fee (see enrolment form) for internal quality control and training purposes.

All fees will be charged V.A.T unless you are from UK NHS (England) or provide a copy of a valid exemption certificate.

3/4