

# UK NEQAS

## Reproductive Science

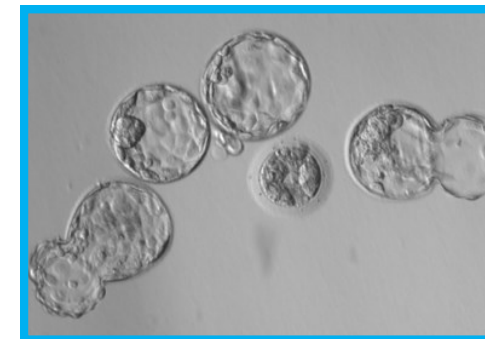
### Please contact:

Email: [repscience@ukneqas.org.uk](mailto:repscience@ukneqas.org.uk)  
Web: <http://www.cmft.nhs.uk/ukneqasrepsci.aspx>

Tel: +44 (0)161 276 6437/6456  
Fax: +44 (0)161 276 6609

UK NEQAS Reproductive Science  
Department of Reproductive Medicine  
Central Manchester University Hospitals NHS Foundation Trust  
Old St Mary's Hospital  
Oxford Road  
Manchester. M13 9WL  
United Kingdom

### Embryology Scheme 2018-2019



## Benefits of External Quality Assessment (EQA)

Benefits of participation with UK NEQAS Reproductive Science EQA schemes are that it:

- ◆ Provides laboratory management with an insight into their performance.
- ◆ Improves both national and local standards.
- ◆ Reveals unsuspected areas of difficulty.
- ◆ Provides an educational stimulus for improvement.
- ◆ Acts as a check on the efficacy of internal quality control procedures.
- ◆ Demonstrates to colleagues and customers a commitment to quality.
- ◆ Provides method performance evaluation (scheme dependant).
- ◆ Provides independent evidence of performance for accreditation bodies.
- ◆ EQA is an educational tool that allows participants to monitor, evaluate and improve their own performance.

### UK NEQAS Reproductive Science

**A UKAS accredited proficiency testing provider No. 8228**

*“Helping to ensure clinical laboratory test results are accurate, reliable and comparable wherever they are produced”*

Established in 1993, UK NEQAS Reproductive Science is based at Central Manchester University Hospitals NHS Foundation Trust, one of the largest Hospital complexes in Europe.

All UK NEQAS designated schemes are members of the UK NEQAS Consortium – a not-for-profit company limited by guarantee and a UK Registered Charity.

### Annual Participants' Meeting

We host a Participants' Meeting each March. This is a chance for participants to meet each other and hear the latest developments in the world of Reproductive Science.

Details are forwarded to all scheme participants.

2/4

## Distributions

Participants will receive four distributions a year.

Each distribution will consist of:

- ◆ 4 'virtual patient cases' each with 4 embryos videos (hosted by <http://gamete-expert.com>).

These are a combination of 'rolling' videos and time-lapse images captured from a time lapse imaging incubator and will include early cleaving to blastocyst stage embryo grades.

The distributions will be sent out on:

**14 May 2018, 13 Aug 2018, 5 Nov 2018 and 4 Feb 2019**

Results should be entered online within four weeks.

### Results and reports

All participants will be provided with passwords from: <http://gamete-expert.com>.

Reports will be available after the distribution closing date from: <https://results.ukneqas.org.uk>.

All new participants will be provided with instructions and passwords.

## The Scheme year runs April - March

### Fees 2018-2019

**Embryo morphology: £575.00**

Laboratories may purchase additional online logins for a nominal fee (see enrolment form) for internal quality control and training purposes.

All fees will be charged VAT unless you are from UK NHS (England) or provide a copy of a valid exemption certificate.

3/4