

UK NEQAS

Reproductive Science

Additional equipment

As well as the equipment you are using for routine patient work you may need to acquire the following equipment for participation in our UK NEQAS schemes:

Embryology: computer with Internet connection is required. For the screen we recommend a width ≥ 1200 pixels and a height ≥ 600 pixels with a diagonal ≥ 15 inch (381mm). Consequently, tablets and smartphones are not recommended for assessment.

Please contact:

Email: repscience@ukneqas.org.uk

Web: <https://mft.nhs.uk/saint-marys/services/ukneqasreproductive-science/>

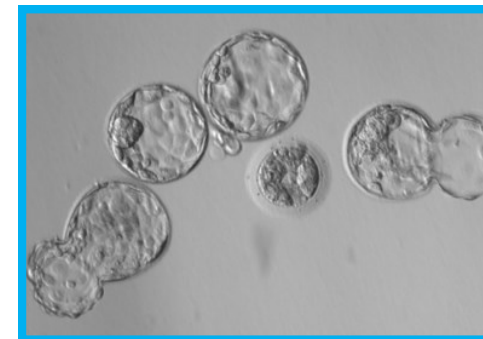
Tel: +44 (0)161 276 6437/6456

UK NEQAS Reproductive Science
Department of Reproductive Medicine
Manchester University NHS Foundation Trust
Old St Mary's Hospital
Oxford Road
Manchester, M13 9WL
United Kingdom

4/4



Embryology Scheme 2021-2022



8228

Benefits of External Quality Assessment (EQA)

Benefits of participation with UK NEQAS Reproductive Science EQA schemes are that it:

- ◆ Provides laboratory management with an insight into their performance.
- ◆ Improves both national and local standards.
- ◆ Reveals unsuspected areas of difficulty.
- ◆ Provides an educational stimulus for improvement.
- ◆ Acts as a check on the efficacy of internal quality control procedures.
- ◆ Demonstrates to colleagues and customers a commitment to quality.
- ◆ Provides method performance evaluation (scheme dependant).
- ◆ Provides independent evidence of performance for accreditation bodies.
- ◆ EQA is an educational tool that allows participants to monitor, evaluate and improve their own performance.

UK NEQAS Reproductive Science

A UKAS accredited proficiency testing provider No. 8228

“Helping to ensure clinical laboratory test results are accurate, reliable and comparable wherever they are produced”

Established in 1993, UK NEQAS Reproductive Science is based at Manchester University NHS Foundation Trust, one of the largest Hospital complexes in Europe.

All UK NEQAS designated schemes are members of the UK NEQAS Consortium – a not-for-profit company limited by guarantee and a UK Registered Charity.

Annual Participants' Meeting

We host a Participants' Meeting each Feb/March. This is a chance for participants to meet each other and hear the latest developments in the world of Reproductive Science.

Details are forwarded to all scheme participants.

2/4

Distributions

Participants will receive four distributions a year.

Each distribution will consist of:

- ◆ 4 'virtual patient cases' each with 4 embryos videos (hosted by <https://gamete-expert.com>).

These are a combination of 'rolling' videos and time-lapse images captured from a time lapse imaging incubator and will include early cleaving to blastocyst stage embryo grades.

The distributions will be sent out on:

10 May 2021, 09 Aug 2021, 08 Nov 2021 and 07 Feb 2022

Results should be entered online within four weeks.

Results and reports

All participants will be provided with passwords from: <https://gamete-expert.com> .

Reports will be available after the distribution closing date from: <https://results.uknegas.org.uk> .

All new participants will be provided with instructions and passwords.

The Scheme year runs April - March

Fees 2021 - 2022

Embryo morphology: £660.00

Laboratories may purchase additional online logins for a nominal fee (see enrolment form) for internal quality control and training purposes.

All fees will be charged VAT unless you are from UK NHS (England) or provide a copy of a valid exemption certificate.

3/4